

**Detailed Design, Construction Supervision and Project Management Support
under Coastal Embankment Improvement Project,
Phase-1, (CEIP-1)**

Review Meeting 04 September 2018

**Bangladesh Water Development Board
Project Management Unit**



Agenda

- Review of progress of Works
- Program for Utilization of allocated fund 2018-2019
- Social and Environmental Safeguard Issues
- Work Programmes W-01 and W-02
- Review of Consultancy Services DDCCS & PMS

Progress of Works

Progress of Works (to date)

CEIP-1 / W-01 construction started 01/2016

- Construction progress 52% (31/36 Months)
- Extension of Time until June 2020, but depending on land availability
- Re-location of Closure Dam polder 32 / pending action
- Commissioning of drainage sluices June 2019 / urgent action

CEIP-1 / W-02 construction started 07/2017

- Poor construction progress 4,5% (14/42 Months)
- Acceleration required / logistics / resources / land availability
- Re-design of polder 48 sea embankment due to progressive erosion
- **Optional** protection / nourishment of Kuakata Beach due to progressive erosion

CEIP-1 / W-03 design phase

- EIA and EMP completed
- LAP's 2017 revision, RAP's in progress
- Detailed design / bidding documents: in progress

W-01 Progress of Works (to date)



W-02 Progress of Works (to date)



Emergency Works (Polder 48)



Accelerate Performance of W-02

- Under-estimation of logistics and local complexity
- Failure of collecting aggregates for concrete
- Un-prepared for scale of Emergency Works
- **Strengthening of Project and Works Management**
- Contractor's recent proposals in favor of acceleration and cost reduction for the Project (*Value Engineering*):
 - Re-design of Polder 48 sea dyke embankment
 - Partly using geo-bags up to LW level in stead of cc blocks for bank protection

Program for Utilization of allocated fund 2018-2019

**Summary of Cost Estimate for Rehabilitation and Upgrading for Contract - CEIP-1/W-01 & CEIP-1/W-02
for FY 2018-19 under
Coastal Embankment Improvement Project, Phase-I (CEIP-I)**

Bill No	Name of Section	Unit	Expected requirement for FY 2018-19 (TK. In BDT)		Total Expected requirement for FY 2018-19 (TK. In BDT)
			Package-1	Package-2	
01	General Mobilization	L.S	89.363.795,22	45.658.840,00	135.022.635,22
02	Construction / Re-sectioning of Embankment (95 Km)	m3	353.928.462,46	794.683.599,84	1.148.612.062,30
	Fine dressing	m2	108.440.555,60	23.705.773,68	132.146.329,28
03	Excavation / Re-excavation of Drainage Channel (75 Km)	m3	58.511.695,20	82.893.523,57	141.405.218,77
04	Construction of Drainage sluices	Nos.	143.630.000,00	749.368.560,77	892.998.560,77
05	Repairing of Drainage sluices	Nos.	8.328.149,49	18.234.536,00	26.562.685,49
06	Construction of Flushing Inlets	Nos.	119.171.450,29	361.712.208,18	480.883.658,47
07	Repairing of Flushing Inlets	Nos.	78.910.762,90	16.495.126,00	95.405.888,90
08	Embankment Slope Protection Work	Km	350.000.000,00	411.419.156,71	761.419.156,71
09	River Bank Protection Work	Km	700.000.000,00	1.579.445.246,61	2.279.445.246,61
10	Dismantling of CC/RCC/Brick Soling/Bituminous Carpeting Road	Km / No.	80.000.000,00	22.995.980,41	102.995.980,41
13	Construction of Closure Dam	No.	100.000.000,00	25.280.800,00	125.280.800,00
	Sub Total =		2.190.284.871,15	4.131.893.351,77	6.322.178.222,92
	Total of Day work		7.500.000,00	10.248.177,44	17.748.177,44
	Specification Provisional Sum		7.500.000,00	24.458.506,58	31.958.506,58
	Physical & Price Contingency		10.000.000,00	40.000.000,00	50.000.000,00
	Physical & Price Contingency (Adjustment to Changes in Cost)		262.834.184,54	289.232.534,62	552.066.719,16
	Adjustment due to change in legislation (VAT & IT)		224.912.102,92	110.815.488,56	335.727.591,48
	Sub Total =		512.746.287,46	474.754.707,20	987.500.994,66
	Grand Total =		2.703.031.158,61	4.606.648.058,97	7.309.679.217,58



Social and Environmental Safeguard (Critical) Issues

Critical W-01

- 100 % payment of compensation of lands under Package-1 has been made by the PMU to the Deputy commissioner Khulna and Bagerhat.
- But 44% affected land owners have **not** received the payment of compensation from the DC *for various reasons*
- The progress of work is being hampered for the obstacles of the remaining land owners who have still not received the payment.
- We intensified our field work

- *This is a joint responsibility of DC and BWDB and supported by Consultant.*
- *We are not able to investigate and address the (individual) reasons for non-payment without the cooperation (or payment) of the DC office.*

Critical W-02

- The land plan of 6 Polders under W-02 have been approved by the MOL long before.
- The concerned DC is preparing the estimate for acquisition of lands to give requisition of money to the PMU office against the estimates.
- **But there is no provision of budget in the DPP**
- Only recently, a proposal for re-appropriation of DPP with **Budget Neutral Inter- Item Cost Adjustment** has been submitted to the MOWR where the provision for land acquisition of W-02 has been made.
- **Land availability to start construction works is pending and depending on the allocation of funds for Land**

Work Programme W-01

Revised Work Programme of CEIP-1W-01

ID	WBS	Work Items	Unit	Qty.	Duration	Start Time	Finish Time	前置任务	Gantt Chart (2016-2020)											
									2016	2017	2018	2019	2020							
1	0	Revised Work Programme of CEIP-1W-01	Ls	1	1618 days	2016年1月26	2020年6月3		[Gantt Chart for ID 1]											
2	1	Preparation	Ls	1	1537 days	2016年1月26	2020年4月10		[Gantt Chart for ID 2]											
3	1.1	Mobilization	Ls	1	123 days	2016年1月26	2016年5月27		[Gantt Chart for ID 3]											
4	1.2	Temporary Facilities	Ls	1	123 days	2016年1月26	2016年5月27 3SS		[Gantt Chart for ID 4]											
5	1.3	Construction Arrangements	Ls	1	61 days	2016年3月28	2016年5月27 3SS+62 days		[Gantt Chart for ID 5]											
6	1.4	Pre-casting CC Block completed before 3rd dry season	3911075	1	638 days	2016年10月1	2018年6月30 5FS+126 days		[Gantt Chart for ID 6]											
7	1.5	Pre-casting CC Block (Remaining)	3132892	1	650 days	2018年7月1	2020年4月10 6		[Gantt Chart for ID 7]											
8	1	Polder 32	Ls	1	1369 days	2016年10月1	2020年6月3		[Gantt Chart for ID 8]											
9	1.2.1	Construction / Re-sectioning of Embankment	Item	1	1369 days	2016年10月1	2020年6月30		[Gantt Chart for ID 9]											
10	1.2.1.1	Embankment (completed up to 3rd dry season)	m³	686243	608 days	2016年10月1	2018年5月31 5FS+126 days		[Gantt Chart for ID 10]											
11	1.2.1.2	Embankment (km35+769-km48+943)	m³	414134	167 days	2018年12月16	2019年5月31 10FS+122 days, 23FS+6 days, 27FS+6 days, 31FS+6		[Gantt Chart for ID 11]											
12	1.2.1.3	Embankment (km13+544-km32+800)	m³	299285	131 days	2019年10月1	2020年2月8 11FS+122 days, 52		[Gantt Chart for ID 12]											
13	1.2.1.4	Embankment (km48+943-km13+544)	m³	220117	107 days	2020年2月9	2020年5月25 12		[Gantt Chart for ID 13]											
14	1.2.1.5	Fine dressing and close turving (completed up to 3rd dry season)	Item	1	818 days	2018年4月5	2020年6月 10FS-57 days 30日		[Gantt Chart for ID 14]											
15	1.2.1.6	Fine dressing and close turving (km35+769-km48+943)	Item	1	453 days	2019年4月5	2020年6月 11FS-57 days, 53FS-87 days 30日		[Gantt Chart for ID 15]											
16	1.2.1.7	Fine dressing and close turving (km13+544-km32+800)	Item	1	86 days	2020年4月6	2020年6月 12, 13FS-50 days 30日		[Gantt Chart for ID 16]											
17	1.2.1.8	Fine dressing and close turving (km48+943-km13+544)	Item	1	86 days	2020年4月6	2020年6月 13FS-50 days 30日		[Gantt Chart for ID 17]											
18	1.2.2	Excavation of Drainage Channel	Item	1	912 days	2016年12月1	2019年5月31		[Gantt Chart for ID 18]											
19	1.2.2.1	Excavation (completed up to 3rd dry season)	m³	87894	546 days	2016年12月1	2018年5月30 5FS+187 days		[Gantt Chart for ID 19]											
20	1.2.2.2	Excavation of Remaining	m³	69306	243 days	2018年10月1	2019年5月31 19FS+123 days		[Gantt Chart for ID 20]											
21	1.2.3	Construction of Drainage Sluices	Item	1	1135 days	2016年10月1	2019年11月9		[Gantt Chart for ID 21]											
22	1.2.3.1	DS-01, DS-02, DS-16, DS-07, DS-08, DS-09	Nos.	6	608 days	2016年10月1	2018年5月31 5FS+126 days		[Gantt Chart for ID 22]											
23	1.2.3.2	Foundation Excavation and Cofferdam of DS-10, DS-11	Nos.	2	70 days	2018年10月1	2018年12月 22FS+122 days 1日 9日		[Gantt Chart for ID 23]											
24	1.2.3.3	Main Structure Construction of DS-10, DS-11	Nos.	2	173 days	2018年12月10	2019年5月31 23		[Gantt Chart for ID 24]											
25	1.2.3.4	Miscellaneous Work	Nos.	2	40 days	2019年10月1	2019年11月9 24FS+122 days		[Gantt Chart for ID 25]											
26	1.2.4	Construction of Flushing Inlets (F-03, D-10)	Item	1	405 days	2018年10月1	2019年11月9		[Gantt Chart for ID 26]											
27	1.2.4.1	Foundation Excavation and Cofferdam of F-03, D-10	Nos.	2	70 days	2018年10月1	2018年12月 5FS+126 days 1日 9日		[Gantt Chart for ID 27]											
28	1.2.4.2	Main Structure Construction of F-03, D-10	Nos.	2	172 days	2018年12月10	2019年5月30 27		[Gantt Chart for ID 28]											
29	1.2.4.3	Miscellaneous Work	Nos.	2	40 days	2019年10月1	2019年11月9 28FS+123 days		[Gantt Chart for ID 29]											
30	1.2.5	Repair of Flushing Inlets	0	576 days	2017年11月1	2019年5月30		[Gantt Chart for ID 30]												
31	1.2.5.1	Foundation Excavation and Cofferdam of FS	Nos.	18	39 days	2017年11月1	2017年12月9 5FS+157 days		[Gantt Chart for ID 31]											
32	1.2.5.2	Repair of Flushing Inlets	Nos.	18	537 days	2017年12月10	2019年5月30 31		[Gantt Chart for ID 32]											
33	1.2.6	Embankment Slope Protection Works	Item	1	974 days	2017年10月1	2020年5月31		[Gantt Chart for ID 33]											
34	1.2.6.1	km6+452-km7+152 & km10+231-km11+231 completed before 3rd dry season	m²	6336	243 days	2017年10月1	2018年5月 5FS+187 days 1日 31日		[Gantt Chart for ID 34]											
35	1.2.6.2	SP Work at km8+294-km8+894	m²	2544	485 days	2018年11月1	2020年2月28 10FS+153 days		[Gantt Chart for ID 35]											
36	1.2.6.3	SP Work at km15+751-km16+751	m²	4000	93 days	2020年2月29	2020年5月31 12, 35		[Gantt Chart for ID 36]											
37	1.2.7	River Bank Protection Works	Item	1	883 days	2017年12月1	2020年5月1		[Gantt Chart for ID 37]											
38	1.2.7.1	CC Block Dumping at km25+450-km25+950 completed before 3rd dry season	m³	1497	182 days	2017年12月1	2018年5月 5FS+157 days 1日 31日		[Gantt Chart for ID 38]											
39	1.2.7.2	CC Block Dumping at km25+450-km25+950	m³	6603	35 days	2019年1月8	2019年2月11 41FS+7 days		[Gantt Chart for ID 39]											
40	1.2.7.3	CC Block Dumping at km48+450-km49+200 completed before 3rd dry season	m³	19560	182 days	2017年12月1	2018年5月 5FS+157 days 1日 31日		[Gantt Chart for ID 40]											
41	1.2.7.4	CC Block Dumping at km48+450-km49+200	m³	14410	92 days	2018年10月1	2018年12月3 40FS+122 days		[Gantt Chart for ID 41]											
42	1.2.7.5	CC Block Dumping at km20+493-km21+243	m³	19750	105 days	2019年2月16	2019年5月31 39FS+4 days		[Gantt Chart for ID 42]											
43	1.2.7.6	Placing Materials & CC Block on protective slo	m³	3140	456 days	2018年10月1	2020年5月1 41SS		[Gantt Chart for ID 43]											
44	1.2.8	Dismantling Work	Ls	1	724 days	2016年10月1	2019年3月30 5FS+126 days		[Gantt Chart for ID 44]											
45	1.2.9	Construction of Closure Dam	Ls	1	550 days	2018年10月31	2020年5月2 23SS+30 days		[Gantt Chart for ID 45]											

Project : CEIP-1W-01
 Contractor : CHWE
 Date : 20-Aug-2018

Task [Green Bar] Summary [Black Diamond]
 Split [Dotted Line] Project Summary [Grey Bar]
 Milestone [Black Diamond] External Tasks [Blue Bar] Critical Path [Red Bar]

Handwritten Signature
 20/08/2018

(Engr. Md. Habibur Rahman)
 Deputy Team Leader
 MNC & PMS Consultants, CEIP-1

Revised Work Programme of CEIP-1W-01

ID	WPS	Work Items	Unit	Qty.	Duration	Start Time	Finish Time	前置任务	2016			2017			2018			2019			2020						
									9	11	1	3	5	7	9	11	1	3	5	7	9	11	1	3	5	7	9
128	4.2.3	Embankment (km38+890-km2+800)	m ²	51225	25 days	2019年3月8日	2019年4月1日	F127																			
129	4.2.4	Embankment (km6+800-km12+800)	m ²	56500	30 days	2019年4月2日	2019年5月1日	F128																			
130	4.2.5	Fine dressing and close turling	Item	1	40 days	2019年5月22日	2019年6月30日	129FS+20 days																			
131	4.3	Excavation of Drainage Channel	m ²	12000	182 days	2018年12月1日	2019年5月31日	5FS+187 days																			
132	4.5	Construction of Drainage Sluices(DS-01, DS-02, DS-03, DS-04)	Nos.	4	973 days	2016年10月1日	2019年5月31日	5FS+126 days																			
133	4.6	Construction of Flushing Inlets	Item	1	1135 days	2016年10月1日	2019年11月9日																				
134	4.6.1	FS-03, FS-04, FS-06, FS08, FS-09, FS-10, FS-13	Nos.	7	608 days	2016年10月1日	2018年5月31日	5FS+126 days																			
135	4.6.2	Foundation Excavation and Coffier Dam of FS-01, FS-05, FS-14	Nos.	3	70 days	2018年10月1日	2018年12月9日	134FS+122 days																			
136	4.6.3	Main Structure Construction of FS-01, FS-05, FS-14	Nos.	3	172 days	2018年12月10日	2019年5月30日	135																			
137	4.6.4	Miscellaneous Work	Nos.	3	40 days	2019年10月1日	2019年11月9日	136FS+123 days																			
138	4.7	Repair of Flushing Inlets	0	577 days	2017年11月1日	2019年5月31日																					
139	4.7.1	Foundation Excavation and Coffier Dam of FS	Nos.	2	39 days	2017年11月1日	2017年12月9日	5FS+157 days																			
140	4.7.2	Repair of Flushing Inlets	Nos.	2	538 days	2017年12月10日	2019年5月31日	139																			
141	4.8	Embankment Slope Protection Works	Item	2	188 days	2018年11月1日	2019年5月7日																				
142	4.8.1	km38+580-km39+280	m ²	2713	107 days	2018年11月1日	2019年2月15日	126FS+153 days																			
143	4.8.2	km0+780-km1+160	m ²	1256	81 days	2019年2月16日	2019年5月7日	142																			
144	4.9	River Bank Protection Works	Item	1	90 days	2018年10月1日	2018年12月2日																				
145	4.9.1	CC Blocks Dumping at km36+220-km	m ²	3230	30 days	2018年10月1日	2018年10月31日	5FS+187 days																			
146	4.9.2	Placing Materials & CC Block on protective slope	m ²	213	30 days	2018年11月30日	2018年12月29日	145FS+30 days																			
147	4.10	Dismantling Work	Ls	1	513 days	2016年10月1日	2018年5月31日	5FS+126 days																			
148	4.11	Section Taking Over (Polder 35/3)	Ls	1	30 days	2019年11月10日	2019年12月9日	129,131,132,137,140,143,146																			

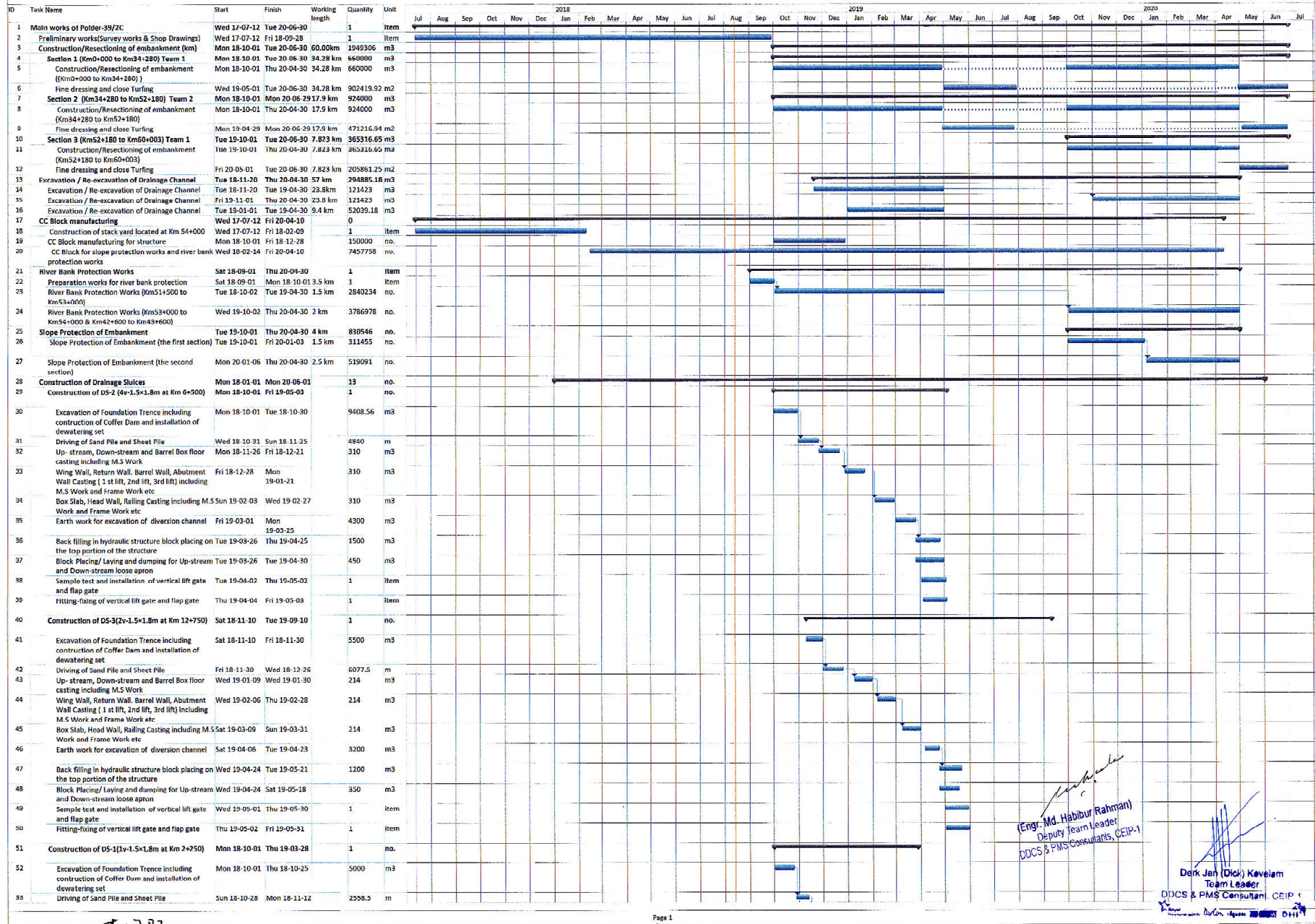
Habib
26/08/2018
(Engr. Md. Habibur Rahman)
Deputy Team Leader
DCCS & PMS Consultants, CEIP-1

Project : CEIP-1W-01
Contractor : CHWE
Date : 20-Aug-2018

Task Summary External Tasks Milestone
Split Project Summary Progress
Milestone External Tasks Critical Path

Work Programme W-02

Work Programme for all the Item of Works under Package-2, CEIP-1



(Engr. Md. Habibur Rahman)
Deputy Team Leader
DDCS & PMS Consultants, CEIP-1

Derk Jan (Dick) Kevelam
Team Leader
DDCS & PMS Consultants, CEIP-1

李國新



Review of Consultancy Services DDCS & PMS

Consultancy Services DDCS&PMS

- Start of Contract: January 2015
- End of Contract: December 2020 (72 Months)

Activities (42/72 Months)

A: Review and update of Designs 10 polders Completed 100%

B: Detailed Design, Environmental and Social Studies (7 polders)

B1: Modelling for detailed design (17 polders) Completed 100%

B2: Detailed design and bidding documents (10 polders) Completed 100%

Detailed design and biddgin documents (7 polders) In progress

B3: Preparation of EIA and EMP (17 polders) Completed 100%

B4: Preparation of LAP/RAP (10 polders) Completed 100%

Preparation of LAP/RAP (7 polders) In progress

Consultancy Services DDCS&PMS

Activities (42/72 Months) Continued

C: Contract Management / Engineer

C1: Construction Supervision	Ongoing
C2: Monitoring EMP implementation	Ongoing
C3: Implementation of RAP	Ongoing

D: Project Management

D1: Project Management Support	Ongoing
D2: Training	Ongoing

Construction Supervision

- Mobilization of international RE mainly for W-02 has been approved and will start in September 2018
- Mobilization of new DRE's for W-01 and W-02 has been approved and will start in September 2018
- Replacement of QCS specialist's for W-01 and W-02
- **Contract Modification No.3 required for continuation of Supervision services until the end on 2019 and additional funding required for continuation until end of Project.**

Monitoring EMP Implementation

W-01

- The Initial Environmental Examination (IEE) of **4 Polders approved** by Department of Environment (DoE)
- Environment Impact Assessment (EIA) Reports of 4 Polders have been prepared, approved by World Bank and DoE and issued Environment Clearance Certificate
- Environmental Action Plan (EAP) of 4 Polders have been prepared by the Contractor, submitted to World Bank

W-02

- The Initial Environmental Examination (IEE) of **6 Polders approved** by Department of Environment (DoE)
- Environment Impact Assessment (EIA) Reports of 6 Polders have been prepared, approved by World Bank and DoE and issued Environment Clearance Certificate
- Contractor's Environment and Social Management Plan (C-ESMP) of 6 Polders have been prepared by the Contractor, submitted to the World Bank

W-03

- The Initial Environmental Examination (IEE) of **7 Polders approved** by Department of Environment (DoE)
- Draft Environment Impact Assessment (EIA) reports (along with review of World Bank and IPoE, Environment and third party M&E Consultants) of 6 Polders have been prepared and submitted to PMU, **the last one (Polder 34/3) to be submitted by first week of September, 2018.**

Monitoring EMP Implementation

Bi-annual Environment Monitoring Report

- Bi-annual Environment Monitoring Reports are being prepared and submitted regularly
- The Fifth (and the latest) of such reports for the period January-June, 2018 has been ***submitted on 08 August, 2018.***

Monthly progress report on Environment

- Monthly progress report on Environmental activities and their progress is submitted regularly

Environmental Monitoring Activities

- Monitoring of Environment, Health and Safety (EHS) issues of construction activities and workers are monitored regularly as per the World Bank and DoE's Guidelines
- Regular reports based on the findings of field visit are prepared and submitted
- Training on EHS issues are imparted to the Contractor's personnel for proper compliance of World Bank's EHS Guidelines

Implementation of RAP (to date)

- Status of Land Acquisition W-01
- Status of Land Acquisition W-02
- Issuing of EP ID Cards W-02

Table -6: Status of land acquisition for four Polders under Package-1 as of August 2018.

SL No	Polder no.	District	Program for L.A. (ha)	Proposal submitted to DC (ha)	Approved (ha)		Possession received(ha)	Pending (ha)		Fund placed BDT in Lac	Payment of CUL by DC in BDT Lac	Remarks
					DLAC	MoL		DC	MoL			
1	2	3	4	5	6	7	8	9	10	11	12	13
1	32	Khulna	50.65	50.65	50.65	50.65	50.65 (26.09.17)	-	-	1615.38	792.70	Persuasion to expedite the CUL payment to Aps is going on
2	33	Khulna	16.81	16.81	14.28	10.94	10.94 (27.09.17)	5.87	-	885.00	281.10	Persuasion to expedite the CUL payment to Aps is going on. Issuance of notices u/s-4 is served against 3.34 ha Banishanta Mauza, joint verification completed. Reconnaissance field visit will be held soon by DC, Khulna for Chunkuri Mauza against 2.53 ha land.
3	35/1	Bagerhat	40.03	40.03	30.17	30.17	30.17 (22.03.18)	09.86	-	4525.92	2363.81	Persuasion to expedite the CUL payment to APs is going on. Necessary activities are going on for all three mauzas by the DC office to the newly proposed lands.
4	35/3	Bagerhat	24.81	24.81	24.81	24.81	24.81 (08.11.17)	-	-	1510.51	848.22	Persuasion to expedite the CUL payment to Aps is going on.
Sub-Total=			132.30	132.30	119.91	116.57	116.57	15.73		8536.81	4285.83	

Table -7: Status of land acquisition for Package-2 as of August 2018

SL No	Polder no.	District	Program for L.A. (ha)	Proposal submitted to DC (ha)	Approved (ha)		Possession received(ha)	Status of handover from DC to BWDB (ha)		Fund placed BDT in Lac	Payment of CUL by DC in BDT Lac	Remarks
					DLAC	MoL		DC	BWDB			
1	2	3	4	5	6	7	8	9	10	11	12	13
1	39/2C	Pirojpur&Jhalokhati	116.08	115.95	115.95	115.95	-	115.95	--	--	--	Approved by MoL (06.12.2017). Notice u/s- 6 served. Final estimate is ongoing.
2	40/2	Barguna	12.45	12.45	12.45	11.67	--	12.45	--	--	--	Approved by MoL (13.03.2018).remain 0.78 ha pending for court Case. Preparation of estimates under processed.
3	41/1	Barguna	8.35	8.35	8.35	8.35	--	8.35	--	317.00	---	Approved by MoL (13.03.2018), Issuance of notices U/S-7 is going on.
4	43/2C	Patuakhali	14.66	14.66	14.66	--	--	14.66	-	--	--	DLAC (14.03.2018). Waiting for issuance of notices u/s-4.
5	47/2	Patuakhali	2.31	2.31	2.31	2.31	--	2.31	-	--	--	Approved by MoL (05/04/2018) Preparation of estimate is under processed
6	48	Patuakhali	0.90	0.90	0.90	0.90	--	0.90	-	--	--	Approved by MoL (9/7/18). Waiting for issuance of notices U/S-6
Total			154.75	154.62	154.62	139.18	--	154.62	--	--	--	

Table -10: Status of current progress of Polder wise EP ID Cards of Package-2 as of August 2018

Polder No.	Number of EP Cards submitted to DDCS & PMS Consultants	Number of EP Cards verified by DDCS Consultant	Number of Cards approved by PD	List of EP ID Card approved date by PD and sent to XEN for issuance	Date of EP ID Card Submission to XEN for signature by RAP/LAP Team	Number of EP ID Cards Submitted to XEN for issuance	Number of EP ID Cards issued by XEN
0	1	2	3	4	5	6	7
39/2C	-	-					
40/2	466	466	466	16/7/17, 28/01/18	20/07/17, 06/03/18	466	Not yet
41/1	216	216	204	16/7/17 22/10/17	20/07/17, 07/12/17	176 28	Not yet Not yet
43/2C	503	503	378	28/01/18	07/03/18	378	271
47/2	131	131	131	16/7/17, 28/01/18	6/8/17 07/03/18	131	131
48	1310	1310	1310	26/7/17 27/7/17 13/8/17 28/01/18	24/9/17 07/03/18	1310	600
Total=	2489	2489	2489			2489	1002

Embankment Polder 33

**THANK YOU FOR
YOUR ATTENTION**

